



Graver Technologies

Filtration | Separation | Purification

MetSorb® MOX-G Novel Adsorbent for Removal of Fluoride and Other Heavy Metals

MetSorb® MOX is an innovation in Metal Oxide technology with unique physical properties that provides exceptional performance characteristics. As a granular media, Graver's **MetSorb® MOX-G** can be utilized in standard down-flow vessels for the treatment of select ions in aqueous streams. The exceptional capacity and kinetics of Graver's MetSorb® MOX products, allows efficient reduction of contaminants with lower media mass requirements.

This patented technology utilizes high capacity sorption properties to selectively remove naturally occurring or added fluoride even in the presence of silica and other competing ions. MetSorb® MOX also has the ability to remove additional heavy metals including arsenic. The fluoride reduction capacities, as high as 80 mg/g, have been demonstrated under select conditions. In head-to-head tests with activated alumina (AA) and bone char, MOX-G provides greater selectivity, greater capacity and faster kinetics.

Features and Benefits

- Provides high capacity, selective removal of **fluoride**
- Outperforms AA and Bone Char in capacity, selectivity and kinetic testing
- Superior kinetics allows for empty bed contact time as low as 5 minutes
- Provides simultaneous removal of **fluoride** and **arsenic**
- Physically stable in standard pH ranges for drinking water

Applications

- Treatment of potable, industrial and wastewater
- Point of Entry (POE) treatment systems
- Point of Use (POU) cartridges
- Faucet mounted and countertop devices



MetSorb® MOX-G 16/60 Specifications

Appearance	White Granular
Moisture Content	< 10%
Average Particle Size	16 x 60 US Mesh
Bulk Density	0.57 +/- 0.05 g/cc 32-38 lbs./ft ³
Packaging	1 cubic foot boxes 280 lb. Fiber Drums, 1,000 lb. Bulk Bags
pH Range	5.5-8.5
Fluoride sorption capacity	25-35 mg/g, 400 g/ft ³

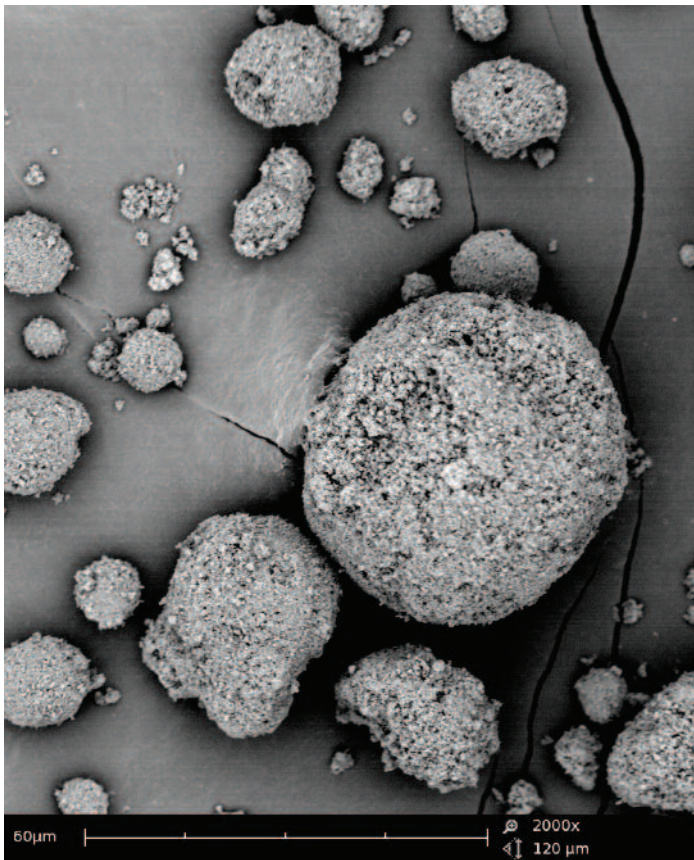
Developed, Patented and Manufactured by Graver Technologies in the **USA**

- USPTO 10449533
- USPTO 10081012

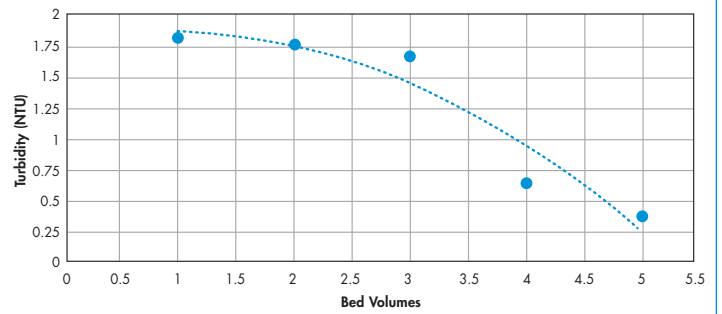
And other patents worldwide

Targeted contaminants with % removal or capacities

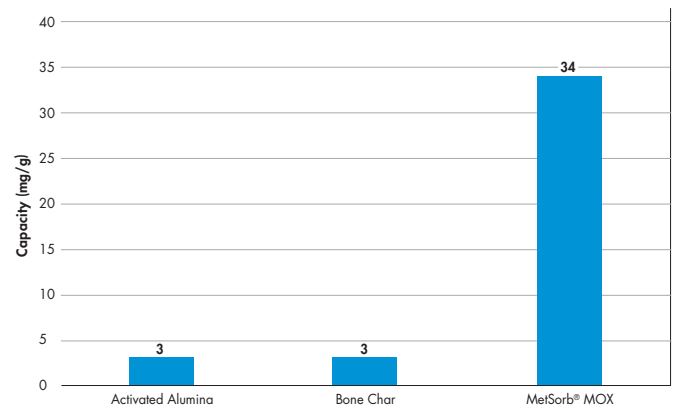
Contaminant	Capacity (mg/g)
Fluoride	34
Arsenic	46



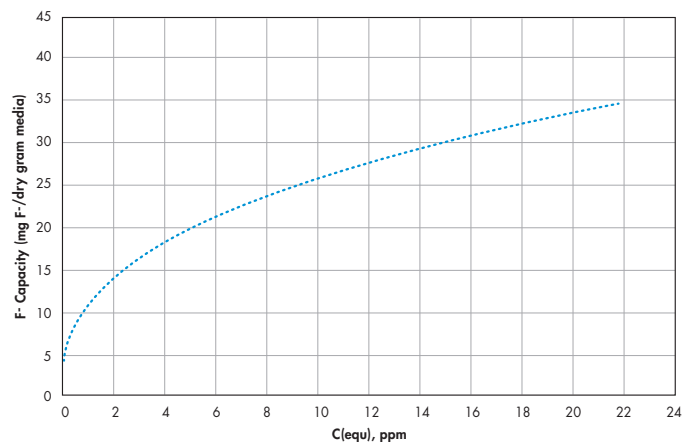
MetSorb® MOX-G 16/60 TURBIDITY ON FORWARD FLOW



MAXIMUM FLUORIDE REDUCTION CAPACITY



MOX FLUORIDE ADSORPTION ISOTHERM



Certified to NSF Standard 61

Member of:



American Water Works Association

The Authoritative Resource on Safe Water™

Water Quality Association

Rural Water Association

For more information

MetSorb® MOX Customer Service: 1-800-533-6623



Graver Technologies

200 Lake Drive, Glasgow, DE 19702 U.S.A.

302-731-1700 • 800-533-6623 • Fax: 302-369-8356

e-mail: info@gravertech.com • www.gravertech.com

All information and recommendations appearing in this bulletin concerning the use of products described herein are based on tests believed to be reliable. However, it is the user's responsibility to determine the suitability for his own use of such products. Since the actual use by others is beyond our control, no guarantee, expressed or implied, is made by Graver Technologies as to the effects of such use or the results to be obtained. Graver Technologies assumes no liability arising out of the use by others of such products. Nor is the information herein to be construed as absolutely complete, since additional information may be necessary or desirable when particular or exceptional conditions or circumstances exist or because of applicable laws or government regulations.



A Marmon Water/Berkshire Hathaway Company

GTX-366

©Copyright, Graver Technologies, 2020

Printed in USA